

TECHNICAL RIDER LONG DISTANCE TOURS 'A TEMPO UMORE'

Stage area

- No stage tilt (raked stage) and stairs for direct access stage-auditorium required
- Stage dimensions: 10m wide x 10 m deep.
- It have to be placed an 8m wide x 6m deep red carpet on the stage. The floor of the stage must be dark.

Stage drapery & machinery

- Black horizon (1 backdrop, 6 legs, 3 borders)
- 4 electric pipes for light fixtures and vídeo projector plus the pipe for lights of the front (See attached plan).
- Downstage curtain needed.
- Black lighting is needed outside the scene for the movements of musicians.

Lighting

- 2 profiles 15/30 (1 iris) + 5 profiles 25/50 robert juliat or similar.
- 18 pc 1kw + gel frames + barn doors
- 26 PAR64 cp62 (n5) with gel frames + 1 PAR64 cp60 (n1)
- 2 asymmetric light to light the room (or room light regulated by dmx)
- 48 2,5kw dimmer chanel (protocol dmx)
- The company has a controller of lights with only one dmx output.

Vídeo

- Projector with shutter, minimum 5000 ANSI lumen, with optimal optics for projecting images directly to backdrop from the first pipe of lights according to the plane (it will depend on the scenic space and power of the projector to gain maximum luminosity) about 4 meters wide x 3 meters in height.
- Control from technical control to the projector using hdmi or vga.
- The company has a pc to play the images.

Sound

- Audio mixer console, minimum 6 channel
- Qualified sound technician to make the audio mix of the atmosphere by microphone of the company and microphone provided by the theater, to send to P.A and monitors.
- P.A suitable for space.
- 2 Monitors to send audio to scene that will be placed behind the first legs on both sides.

Microphone company

- 3 shure Beta 91A microphones that are placed in front of the carpet to capture an orchestral environment

Microphone provided by the theater

- 2 ambient microphones placed behind the second legs to reinforce sound from the back of the orchestra with a microphone foot.
- 1 mini-jack to play audio from technical control.
- Sound reinforcement that the sound technician of the space considers appropriate, as long as it doesn't affect the scene visually.

Dressing rooms

- 1 dressing room with shower, hot water, toilet and mirror, for 5 women.
- 1 dressing room with shower, hot water, toilet and mirror, for 7 men.
- 1 dressing room with shower, hot water, toilet and mirror, for the director
- Bottled water for everyone during the build up, the show and the take down

Staff

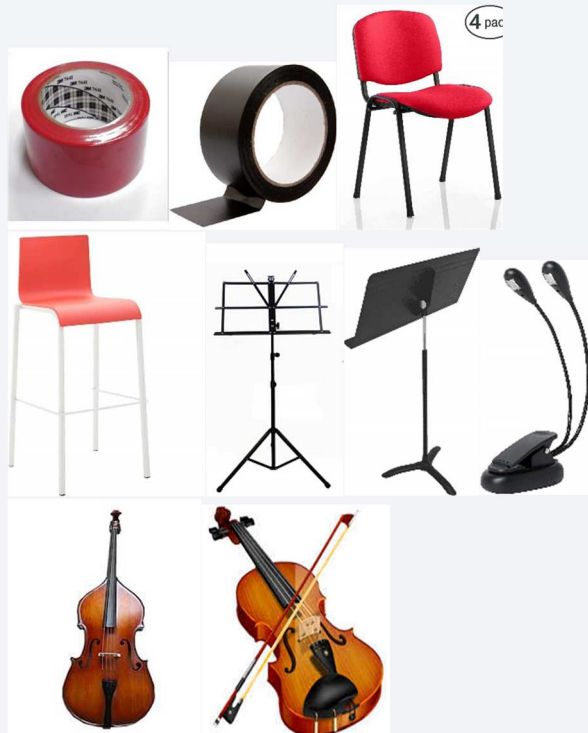
- From the theater: Personal loading and unloading (3 carpets, 1 flycase wheels, 13 chairs), 1 sound technician, 1 lighting technician, 1 technical machinery.
 - Of the company: 12 musicians / actors, 1 director, 1 technician
- * During assembly we must have at least 3 people in the theater to assemble sound, assemble, focus and give lighting channels; stay with the company technician for download time, and assembly.

Stage Simulation



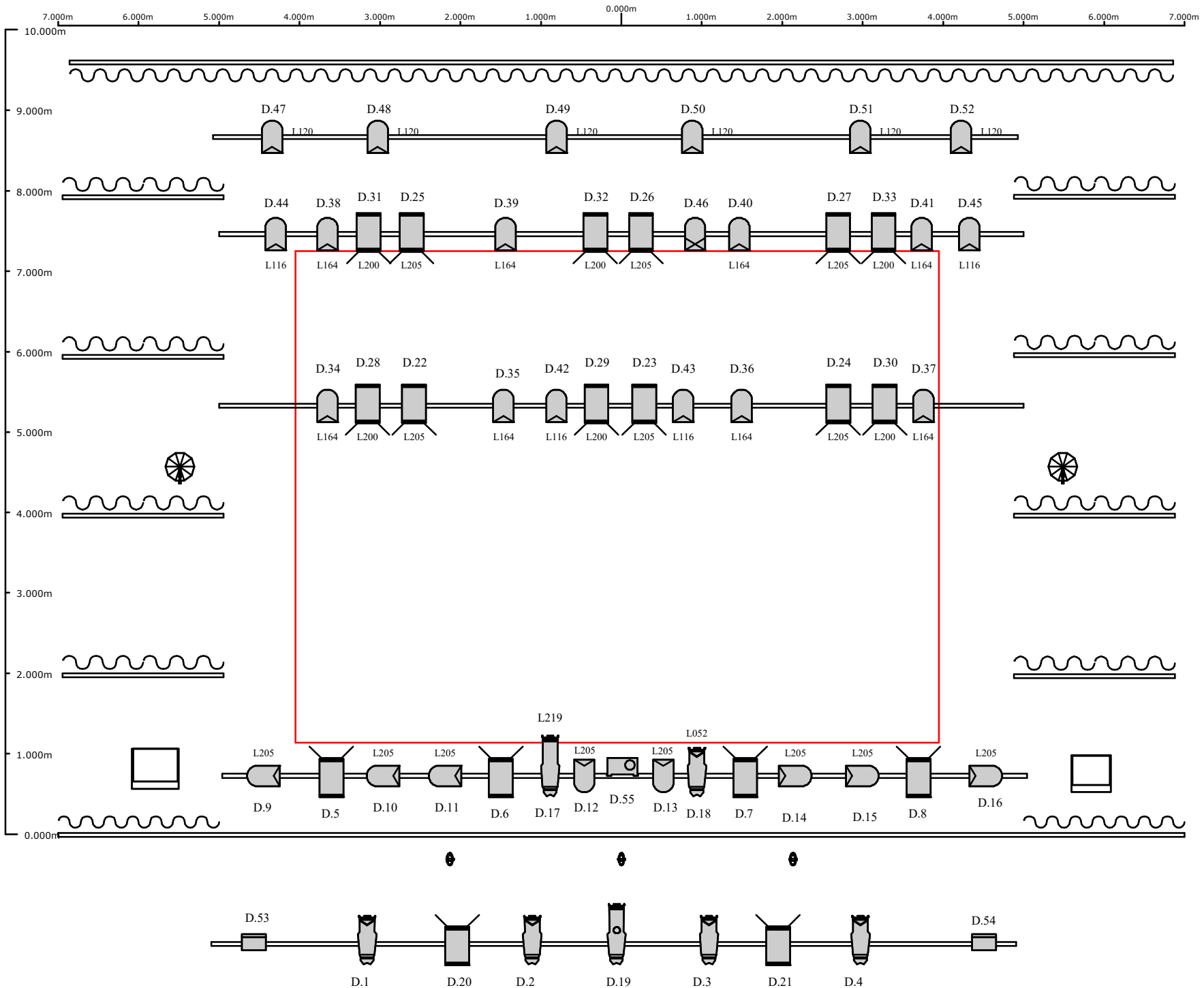
ATREZZO

- An 8m wide x 6 m deep red carpet to place on the stage.
- We need red and black linoleum tape to attach carpet to the floor (black around the carpet and red to paste the carpet together).
- 11 charming, elegant seats for the musicians (armless chairs) and 1 high chair for the double bass (75cm). Better in red colour as the carpet.
- 1 big music stand for conductor + 7 black music stands
- 8 lights for lecterns
- 1 double bass + 1 props violin.



Technical Contact: Sergi Torns/ +34635949013/ sergi.torns@gmail.com

CONCERTO A TEMPO D'UMORE



FIXTURES

	PC 1KW	18
	PAR 64 CP62	26
	PAR 64 CP61	1
	PROFILE 25/50	5
	PROFILE 15/30	2
	ASIMETRICA	2
	IRIS	1
	PROJECTOR	1
	+ OBTURADOR	

	MIC SHURE BETA 91A
	AMBIENT MIC
	MONITOR
	RED CARPET 8X6M